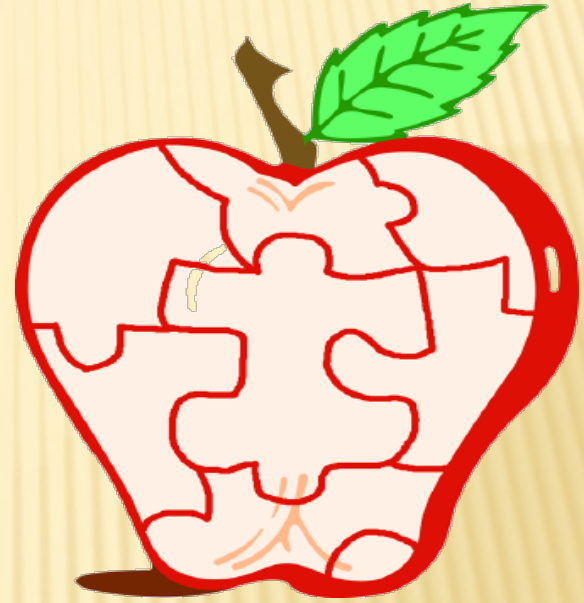


**Proposed Zoning
Changes for
McNeill Elementary**

February 8, 2011



ATTENDANCE BOUNDARY COMMITTEE

ABC 2-8-11 AGENDA

- × Welcome
- × Introductions
- × Review of Zoning Process
- × Master Plan Principals
- × Recommendation
- × Rationale
- × Public Input / Addressing Objections
- × Time Line/Next Meeting
- × Questions/Comments

THE ZONING PROCESS

Step 1: The administrative team will present all options to be considered for rezoning. The **Board will charge the administration with rezoning priorities** to be considered by the ABC and **approve the ABC membership roster** for that year.

Step 2: Involve parents and community members in the process through the district Attendance Boundary Committee (ABC). **The ABC will review the supporting data and options** presented by the administration and work to propose possible zoning recommendations for Board consideration and approval.

Step 3: The plan(s) will be shown at a **Community Forum(s) for parent input**.

Step 4: Based on parent input from the Community Forum(s), the **ABC will make any needed modifications to its recommendations**. Modified ABC recommendations can be presented orally or in a written format to the Board.

Step 5: Additional Community Forum if needed to allow for parent comments on any ABC changes to the original recommendation.

Step 6: ABC will **submit final recommendation to the Board Zoning Committee** for input.

Step 7: Zoning plan(s) **submitted for Board approval**.

ZONING OBJECTIVES/CRITERIA

The district's Framework for Facilities Planning established a need for objectives and criteria to be used to guide zoning decisions. The following 12 objectives should be used when developing new attendance zones. All of the 12 objectives should be given equal weight when making boundary decisions.

1. To draw attendance zones in a way that supports an **efficient/effective use of school facilities**.
2. To **reduce overcrowding** of campuses.
3. To **plan for future growth**.
4. To **keep neighborhoods and feeder schools tracking together**, as much as possible.
5. To **minimize rezoning neighborhoods** which have been affected in previous rezonings.
6. To draw secondary zones which reflect the diversity of the district, as much as possible.
7. To **consider elementary students' proximity to a campus**, being mindful of traffic patterns that allow for the safest routes available.
8. To **involve the community** in defining the objectives/criteria for rezoning.
9. To develop a **fair and objective** rezoning process.
10. To always keep in mind **doing what is in the best interest of students**.
11. To **communicate zoning information** effectively to all students and families that may be impacted.
12. To consider **fiscal impact** of changes.

ATTENDANCE BOUNDARY COMMITTEE MAKE-UP

- ✘ Membership of the ABC will consist of two representatives from each elementary and middle school campus and three representatives from each junior high and high school campus.
- ✘ The campus administrator will select campus representatives with the entire committee approved by the Board. Appropriate central administrators will serve as resources as needed.
- ✘ District information and the Board's charge for rezoning considerations will be presented to the entire committee. Only representatives from campuses affected by rezoning and their feeder schools will be involved in making the rezoning recommendations to be presented to the Board.
- ✘ Current Board members cannot serve on the Attendance Boundary Committee.

MASTER PLAN PRINCIPLES

ADOPTED BY THE BOARD MAY 15, 2003

- ✘ To maximize enrollment at all campuses:

Elementary schools	750 maximum
Middle schools (6)	750 maximum
Junior high schools (7-8)	1400 maximum
High schools	2000 maximum

- ✘ To embrace the neighborhood school concept for all elementary students who reside in LCISD.

- ✘ To house grades PK-5 in all elementary school to insure parents and students that they can enjoy six years of attending school on the same campus.

- ✘ To reflect the ethnic balance of the school district in grades 6 – 12.

- ✘ To locate schools with grades 6 – 12 in the same general area.

- ✘ To minimize the alteration of high school zones.

- ✘ To provide adequate space for school/community-based education programs.

THE LCISD ZONING PROCESS

REVISED AND APPROVED BY THE BOARD 9/23/04

FACT: Lamar CISD is among the fastest growing school districts in the state. A large number of residential developments are under construction or in the planning stages throughout the LCISD community. The district must continue providing all students with a quality education.

BACKGROUND: In a growing school system, it is inevitable that the district's attendance zones will be changed periodically. As new schools open and population shifts occur, attendance zones will be adjusted. Each campus in the district is unique and offers many enrichment opportunities for students. Our goal is to ensure that all campuses, regardless of location, provide quality programs.



Lamar CISD is Growing!

Enrollment

2009	23,864
Projected 2010	24,672
Current	24,629

Operating 36 schools

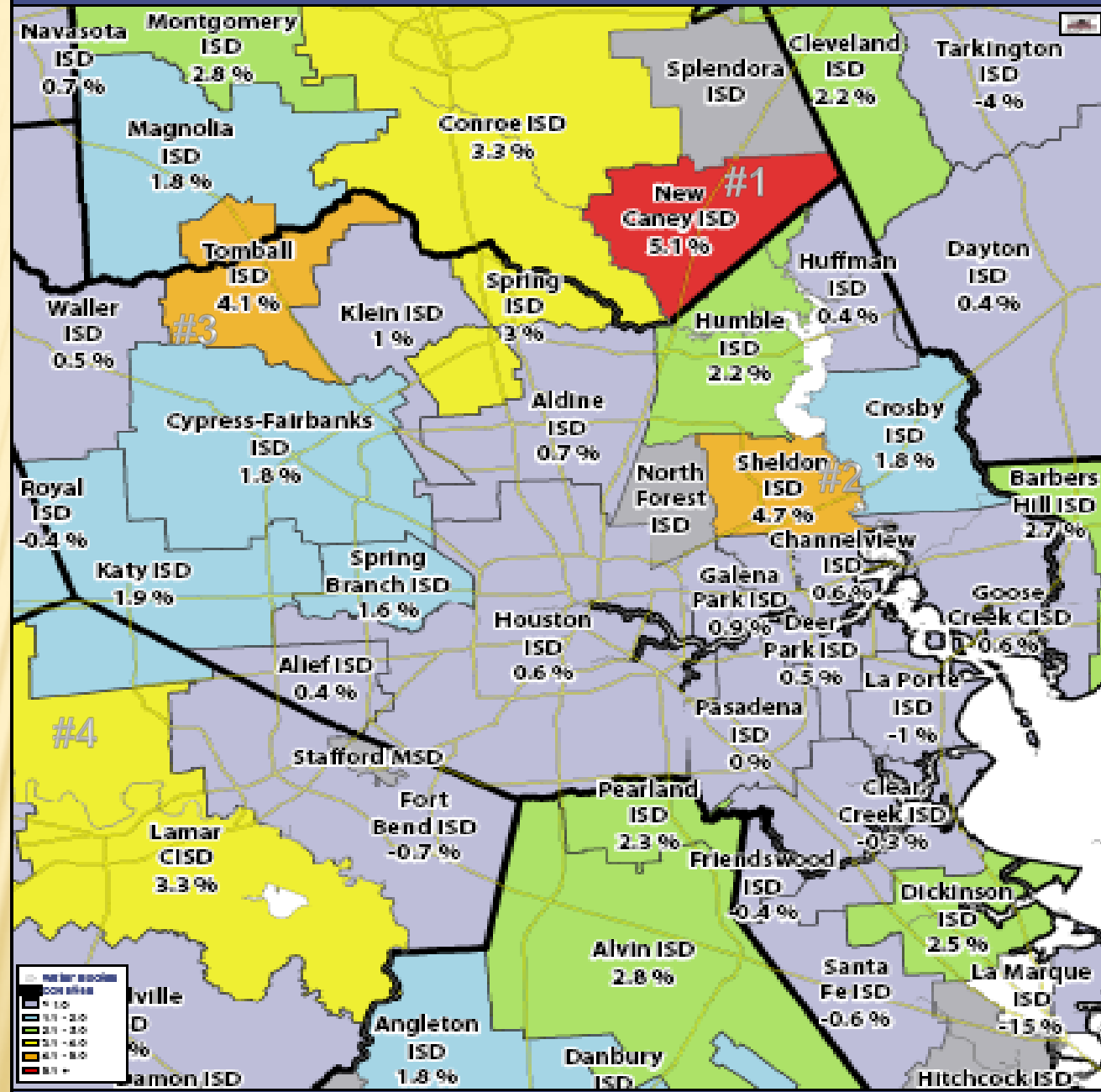
- 21 Elementary Schools
- 3 Middle Schools
- 4 Junior High Schools
- 4 High School
- 4 Special Sites

Percent Change in School District Enrollment

1-Year Change: 2009-10 to 2010-11

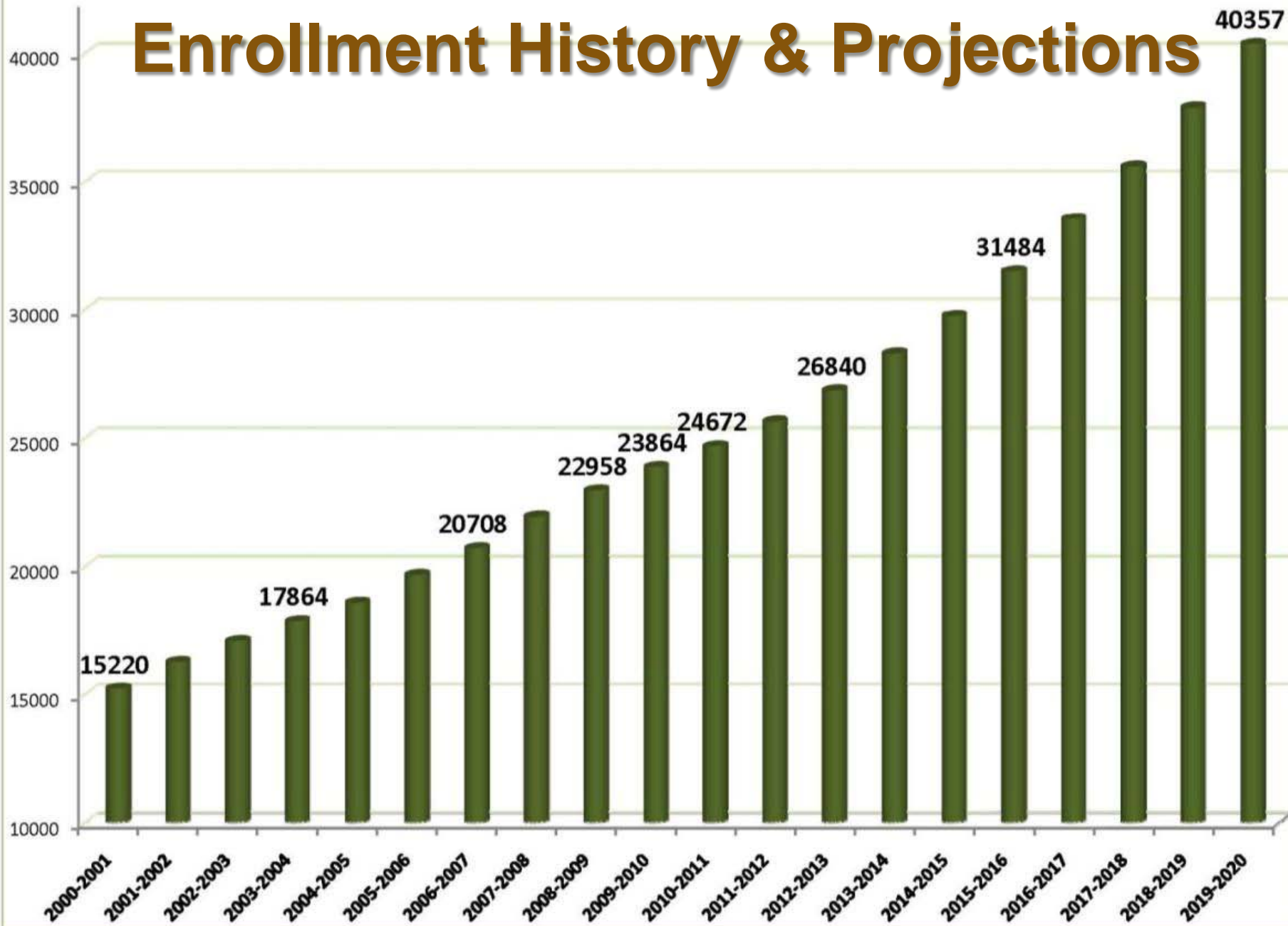
(based on pre-PEIMS estimates in September 2010)

HOUSTON



Lamar CISD is the 4th high growth district in the greater Houston area for last year.

Enrollment History & Projections

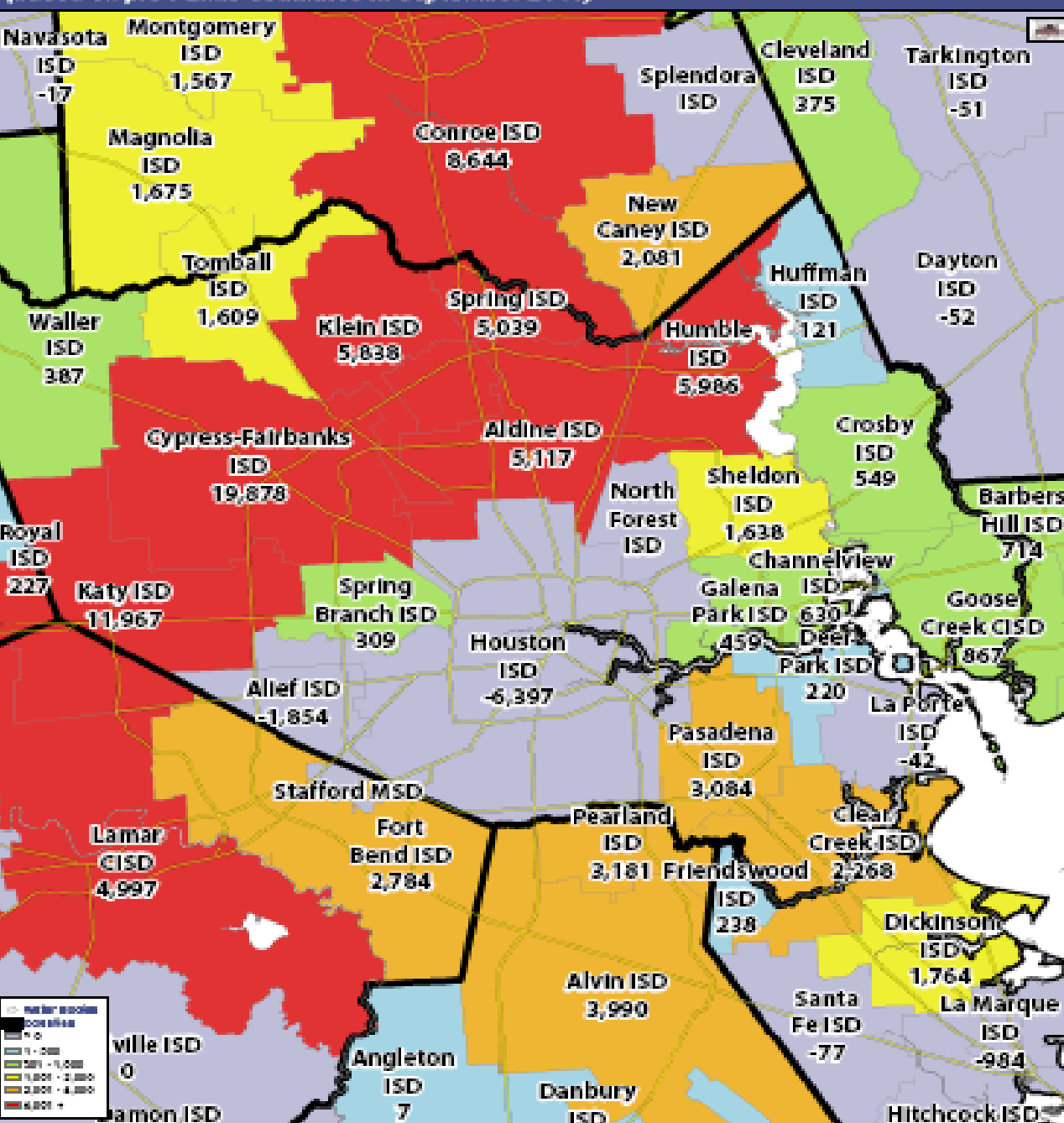


Absolute Change in School District Enrollment

5-Year Change: 2005-06 to 2010-11

(based on pre-PEIMS estimates in September 2010)

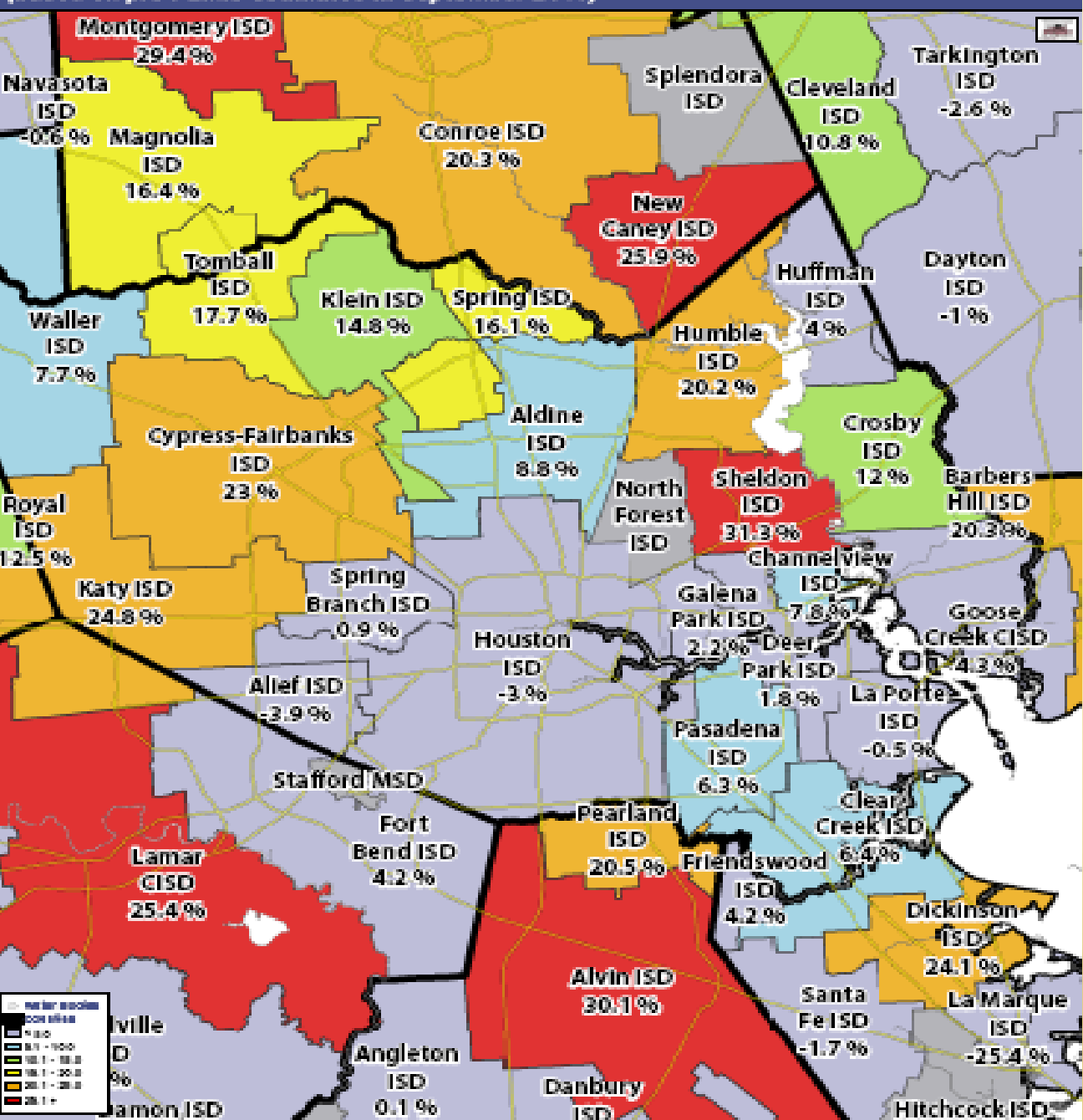
HOUSTON



Over the past five years, LCISD has added 4,997 students.

Percent Change in School District Enrollment
5-Year Change: 2005-06 to 2010-11
(based on pro-PEIMS estimates in September 2010)

HOUSTON



We have grown 25.4% over the five-year span.

This is a greater percentage than both Fort Bend and Katy.

Lamar CISD

Enrollment Projections by School

Updated 11/17/10

		Current	Projection	Projection	Projection	Projection	Projection	Projection	Projection	Projection	Projection
School	Capacity	Fall 2010	Fall 2011	Fall 2012	Fall 2013	Fall 2014	Fall 2015	Fall 2016	Fall 2017	Fall 2018	Fall 2019
Austin	720	601	700	728	770	819	867	915	945	976	1003
Beasley	370	411	432	446	460	482	517	569	630	705	785
Bowie	640	747	636	658	680	688	696	706	715	726	739
Campbell	720	759	752	758	762	762	762	762	762	762	762
Dickinson	750	629	644	654	662	663	663	663	663	663	663
Frost	720	705	748	797	859	936	1013	1088	1160	1235	1307
Hubenak	750	423	413	474	535	613	694	778	839	910	982
Huggins	650	455	461	514	627	837	1090	1383	1705	2085	2497
Hutchison	750	783	889	919	951	976	1012	1052	1096	1145	1197
Jackson	520	387	397	417	432	442	454	468	481	498	517
Long	750	572	539	556	569	574	581	601	621	641	662
McNeill	750	899	892	923	971	1029	1083	1138	1189	1247	1306
Meyer	750	553	693	727	783	863	948	1043	1132	1226	1325
Pink	720	620	661	680	704	726	740	749	749	749	749
Ray	640	683	745	769	786	792	795	797	798	799	800
Seguin	460	258	423	441	455	460	467	475	484	494	504
Smith	600	627	663	687	703	712	721	128	734	741	741
Thomas	750	700	649	707	794	938	1108	1301	1499	1722	1953
Travis	680	781	799	822	843	850	857	864	870	878	886
Velasquez	750	629	640	668	704	747	803	888	984	1092	1207
Williams	750	657	698	735	779	833	885	938	986	1038	1091
Navarro	660	429	498	512	536	531	583	623	663	712	755
Wertheimer	600	437	483	495	518	508	617	685	767	855	944
Wessendorff	680	448	507	516	538	537	561	581	597	614	629
Briscoe	1200	934	835	933	1030	1076	1108	1226	1415	1583	1773
George	1225	884	964	1028	1086	1107	1128	1191	1292	1379	1478
Lamar Jr.	1080	793	964	1018	1070	1080	1088	1118	1159	1190	1225
Reading	1200	1457	1434	1496	1551	1560	1617	1695	1811	1926	2041
Foster	2000	1951	1641	1740	1883	2114	2311	2528	2680	2894	3146
George Ranch	1400	787	1359	1412	1474	1559	1632	1723	1789	1883	1992
Lamar CHS	2000	1807	1825	1888	1953	2015	2065	2121	2153	2193	2239
Terry HS	2050	1644	1656	1722	1806	1915	2018	2131	2217	2324	2459

Projection totals are based on Districtwide projections and do not include special sites or transfer students

Elementary
Long Range Planning
Summary

New in 2015 & 2018



Site of ~~Senior Center~~ ~~and~~ ~~Complex~~

New in 2012

New in 2017

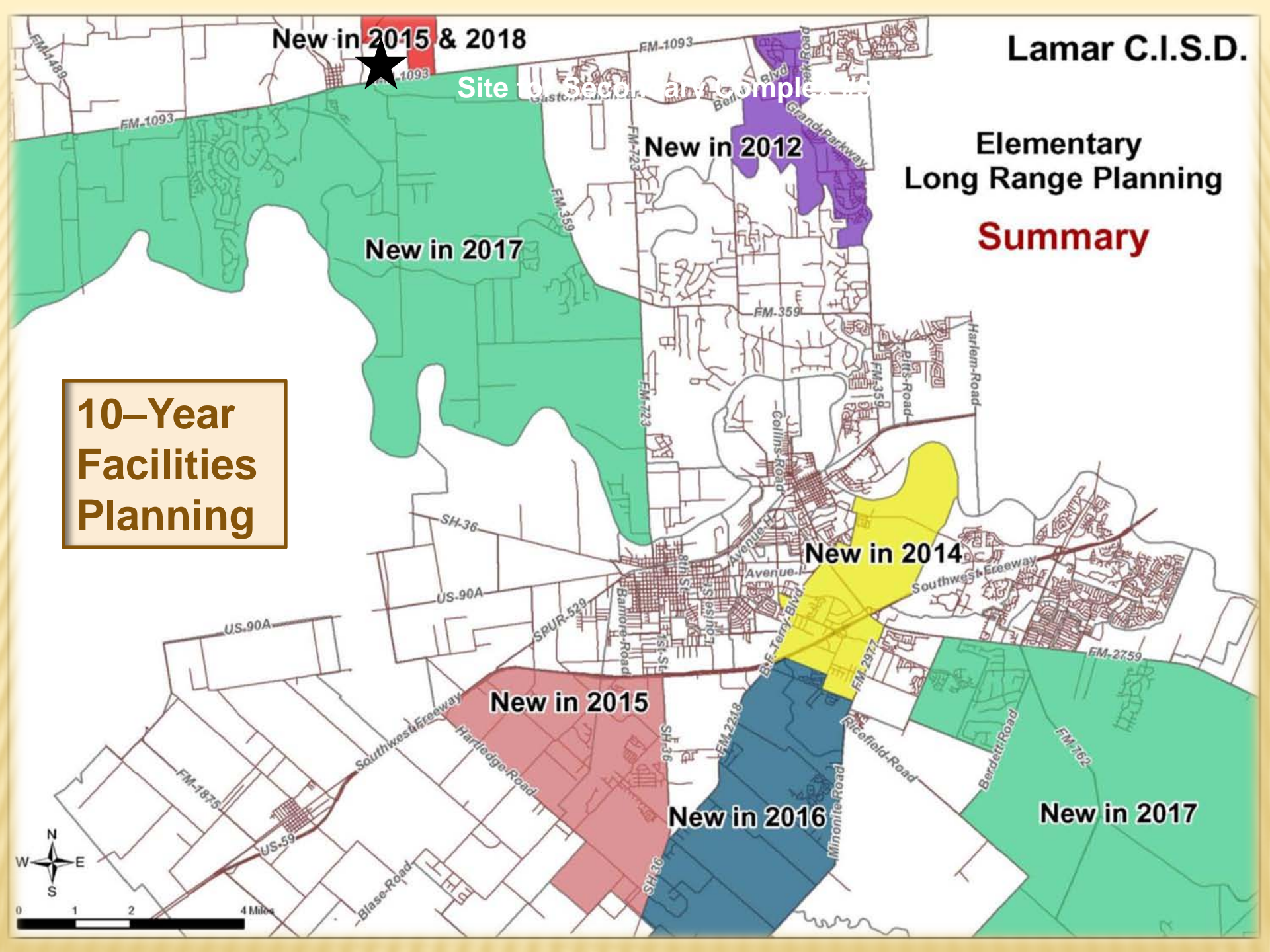
10-Year
Facilities
Planning

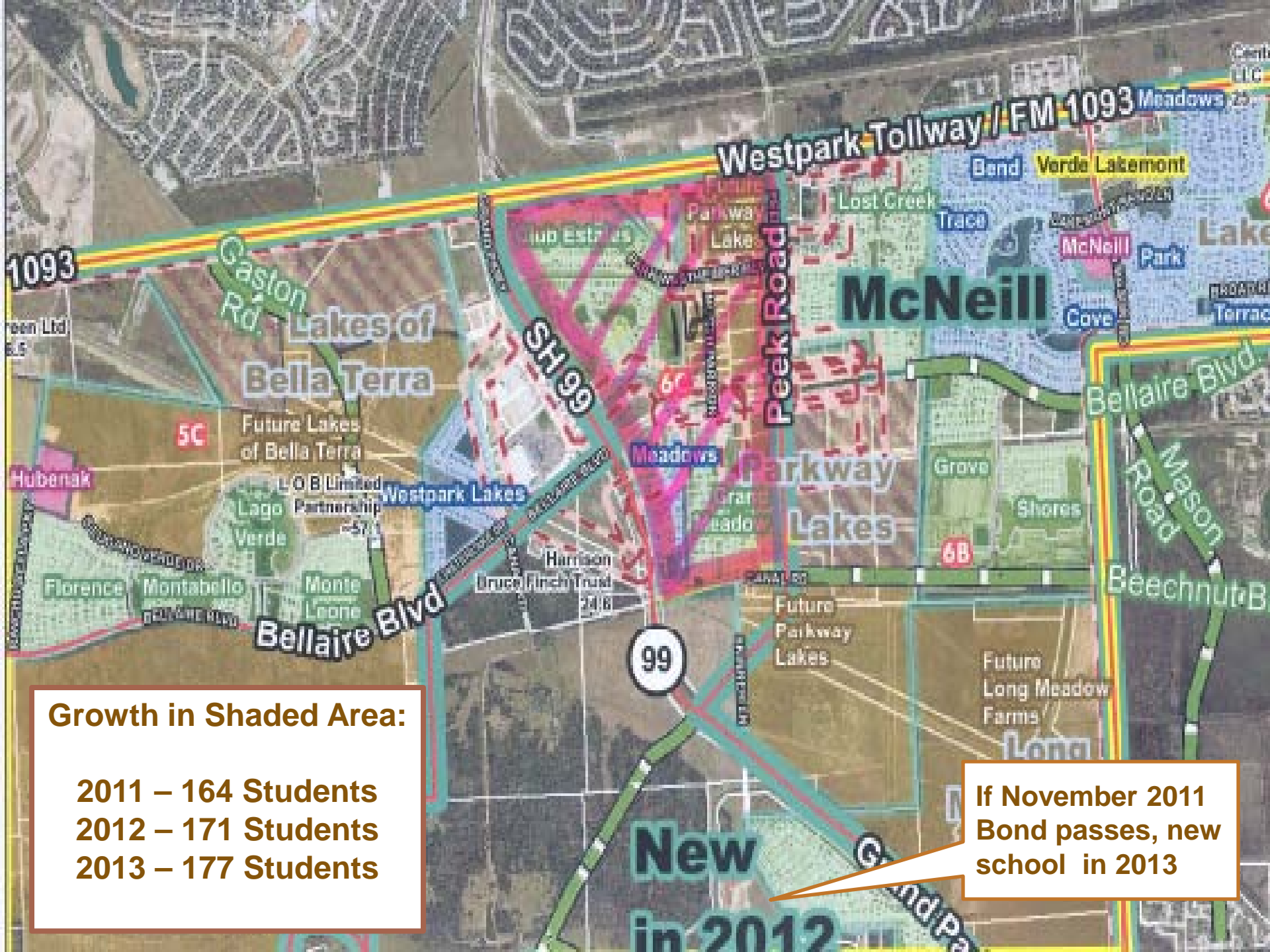
New in 2014

New in 2015

New in 2016

New in 2017





Growth in Shaded Area:

- 2011 – 164 Students**
- 2012 – 171 Students**
- 2013 – 177 Students**

If November 2011 Bond passes, new school in 2013

TENTATIVE TIME LINE FOR FALL 2011 CHANGES

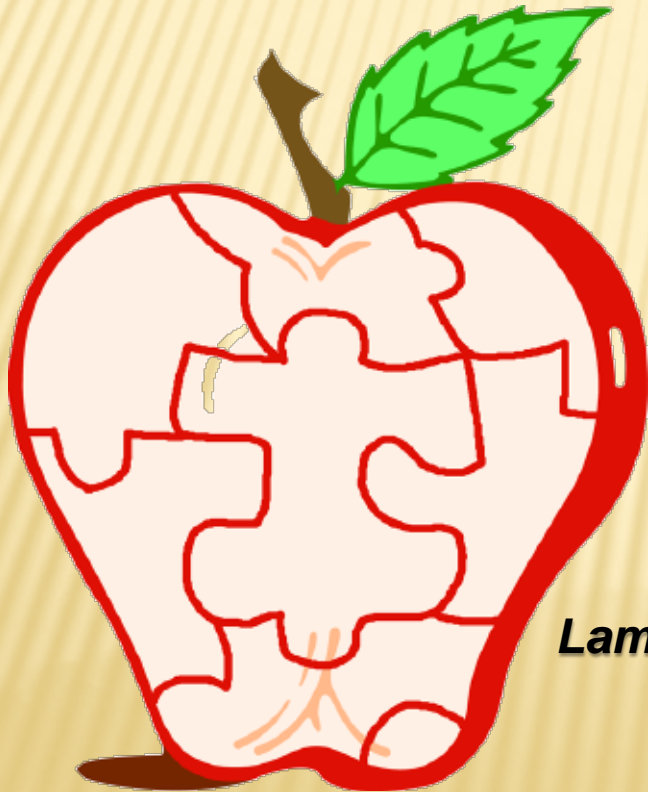
- × **February 8** **First ABC Meeting**
- × **February 15** **Second ABC Meeting**
- × **February 22** **Third ABC Meeting (if needed)**
- × **March 1** **Public Input at Briscoe JH**
- × **March 8** **ABC Meeting – Zoning Recommendation Finalized for Recommendation to the Board**
- × **March 22** **ABC Recommendation to the Board Zoning Committee Additional Public Input if needed**
- × **March 22/24** **ABC Recommendation to the Board at Board Meeting**
- × **April 4** **Information sent out to parents of students rezoned if approved by Board**
- × **April 19** **Regular Board Meeting - ABC Recommendation to the Board/Additional Public Hearing/Board discussion if not approved at the March meeting**

QUESTIONS?

- ✘ Update committee contact information
- ✘ Committee presentations posted to website
- ✘ Objective is to choose what is best for the entire district
 - + Students, future students, parents, taxpayers

ADJOURN

Thank you for your service to our district!!



***Lamar CISD is a great place for kids
- any way you slice it!***